

ENVIRONMENTAL JUSTICE

Support local communities



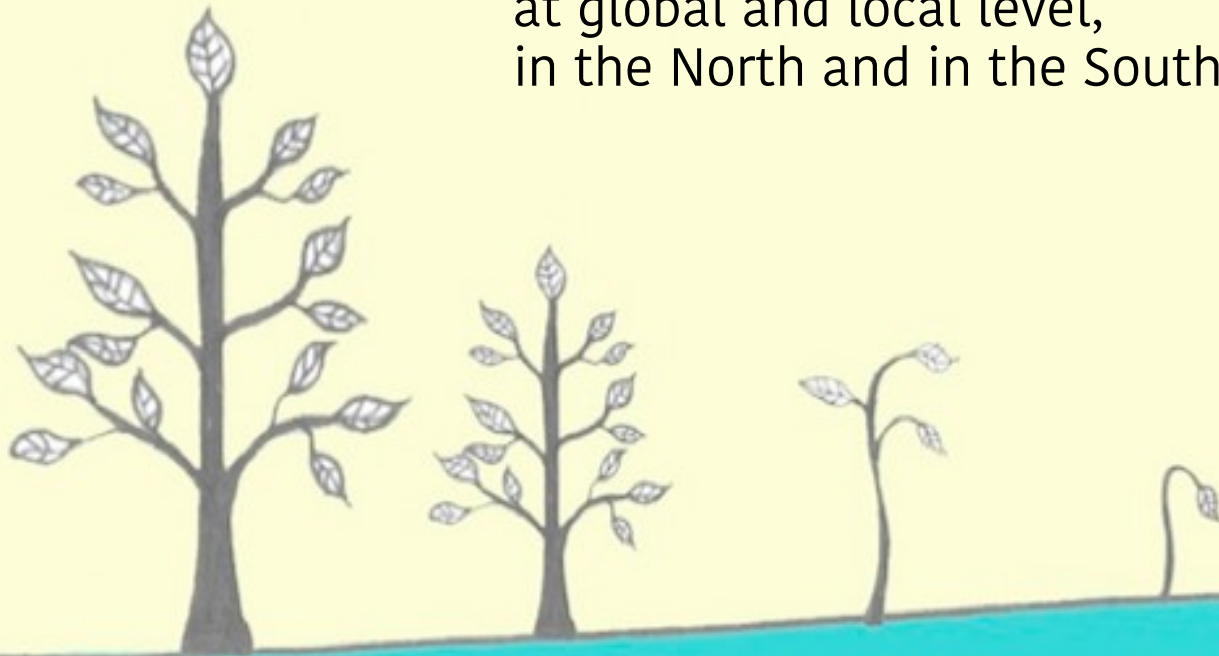
BACKGROUND

> Environmental justice

Bottom up analysis category

VS

Unqualities produced by the economic system
at global and local level,
in the North and in the South



BACKGROUND

> Sacrifice communities

The concept of environmental injustice focalizes that **some communities** are disproportionately **subjected**

> Environmental racism

to higher levels of **environmental risk** than others. Most contaminating activities concentrated in area inhabited by disadvantaged communities



> Environmental conflicts

> Symptomatic manifestation of **unsustainability** of the economic model based on the intensive exploitation of natural resources

> Request of **participation** in decision making process

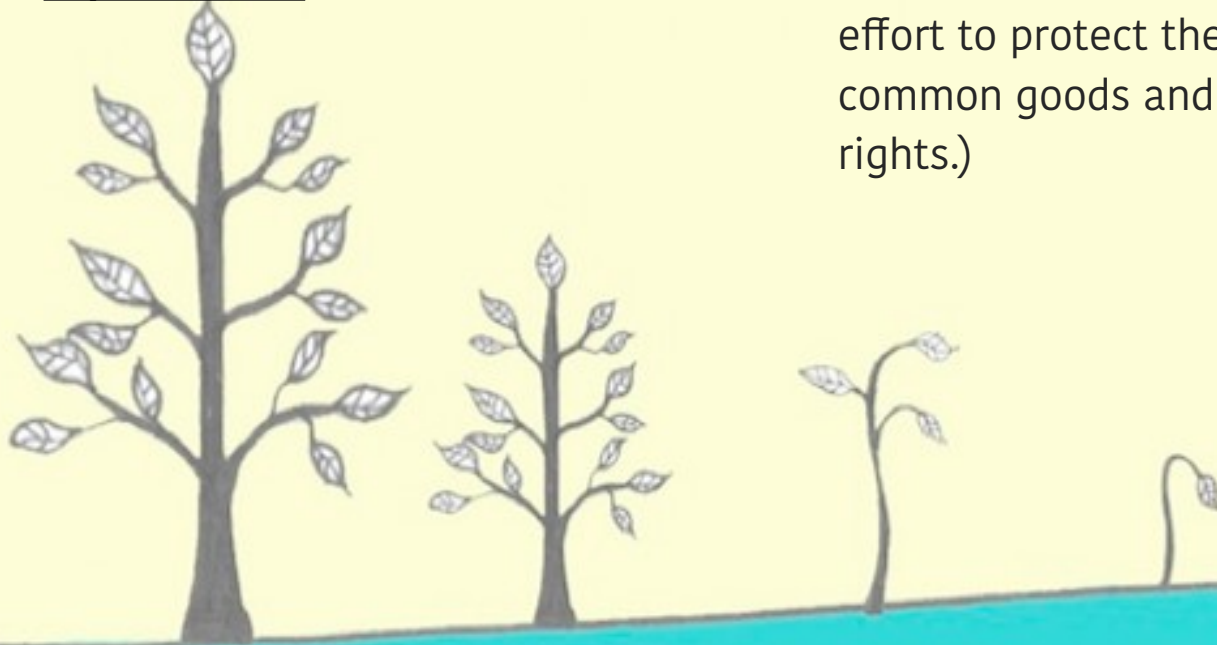
> Geography of **active democracy experiments**

A particular social conflict characterised by:

A. The qualitative or quantitative reduction of available environmental resources (*water, biodiversity, arable land, raw materials and other finite common goods*)

B. Imposition of profitable projects by multinational companies and/or inappropriate policies by Governments, International financial organisations.

B. Social opposition (protests by local residents and/or larger opposition movements in civil society, in an effort to protect the environment, common goods and people's rights.)



> BUILDING TOOLS for Environmental conflicts

Supporting communities

> Visibility / Media attention

> Creating participatory knowledge

> Legal strategies

> Independent monitoring

system



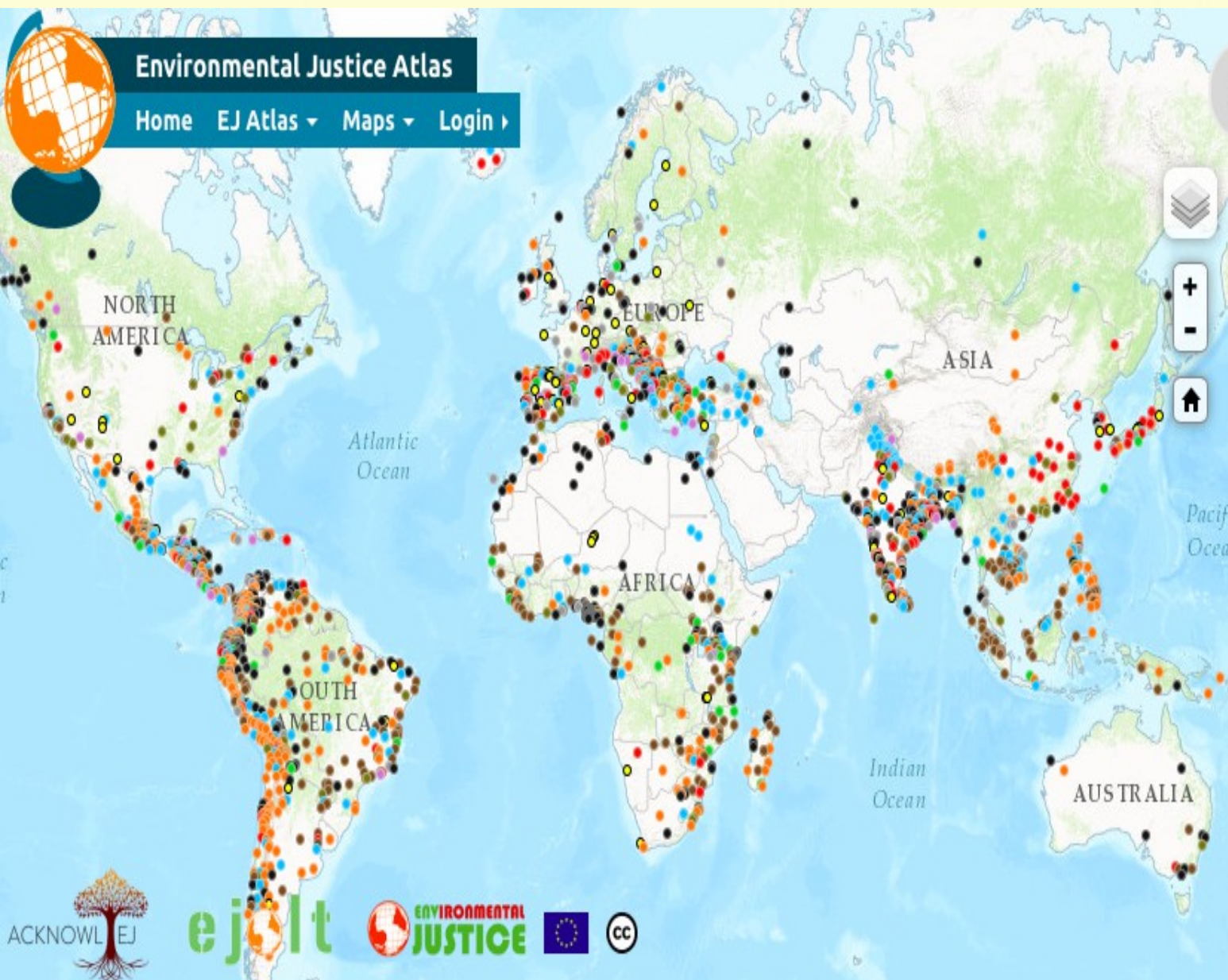
ENVIRONMENTAL JUSTICE ATLAS - EJATLAS

> Ejolt project (EU investigation project)

- > Web platform / GIS system
- > Free database (target: reasercher, journalists, activists, etc.)
- > Participative mapping tool
- > Network tool



ENVIRONMENTAL JUSTICE ATLAS - EJATLAS



World Map

2048 cases reported

You can [contribute to EJ Atlas](#)

Legend

- Nuclear
- Mineral Ores and Building Extractions
- Waste Management
- Biomass and Land Conflicts
- Fossil Fuels and Climate Justice
- Water Management
- Infrastructure and Built Environment
- Tourism Recreation
- Biodiversity Conservation Conflicts
- Industrial and Utilities Conflicts

Filter

- [Browse maps](#)
- [Get Involved](#)
- [Featured Maps](#)

ENVIRONMENTAL JUSTICE ATLAS - EJATLAS

Legend

-  Nuclear
-  Mineral Ores and Building Extractions
-  Waste Management
-  Biomass and Land Conflicts
-  Fossil Fuels and Climate Justice
-  Water Management
-  Infrastructure and Built Environment
-  Tourism Recreation
-  Biodiversity Conservation Conflicts
-  Industrial and Utilities Conflicts

Browse maps

- > by Country
- > by Company
- > by Commodity
- > by Type



ENVIRONMENTAL JUSTICE ATLAS - EJATLAS

Filter

Basic Data

- Name
- Success Level**
- Population Type
- Country
- Region

Category

- Project
- Conflict
- Resistance
- Impacts
- Outcomes
- Meta

Success Level

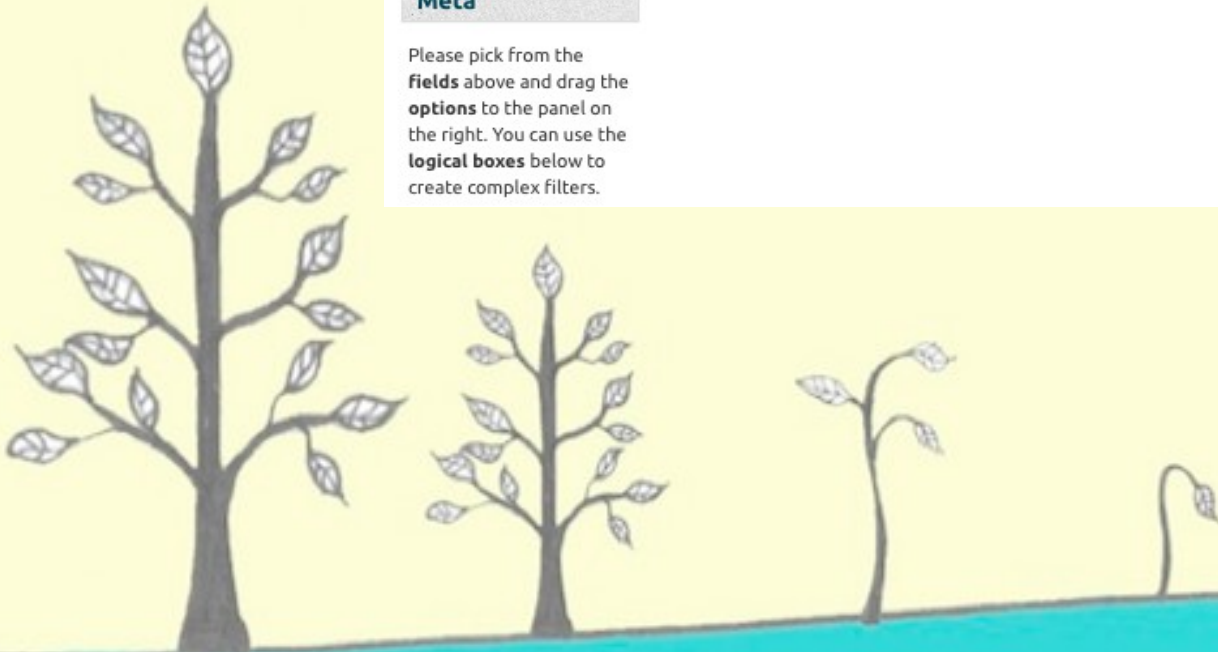
Success

Not sure

Failure

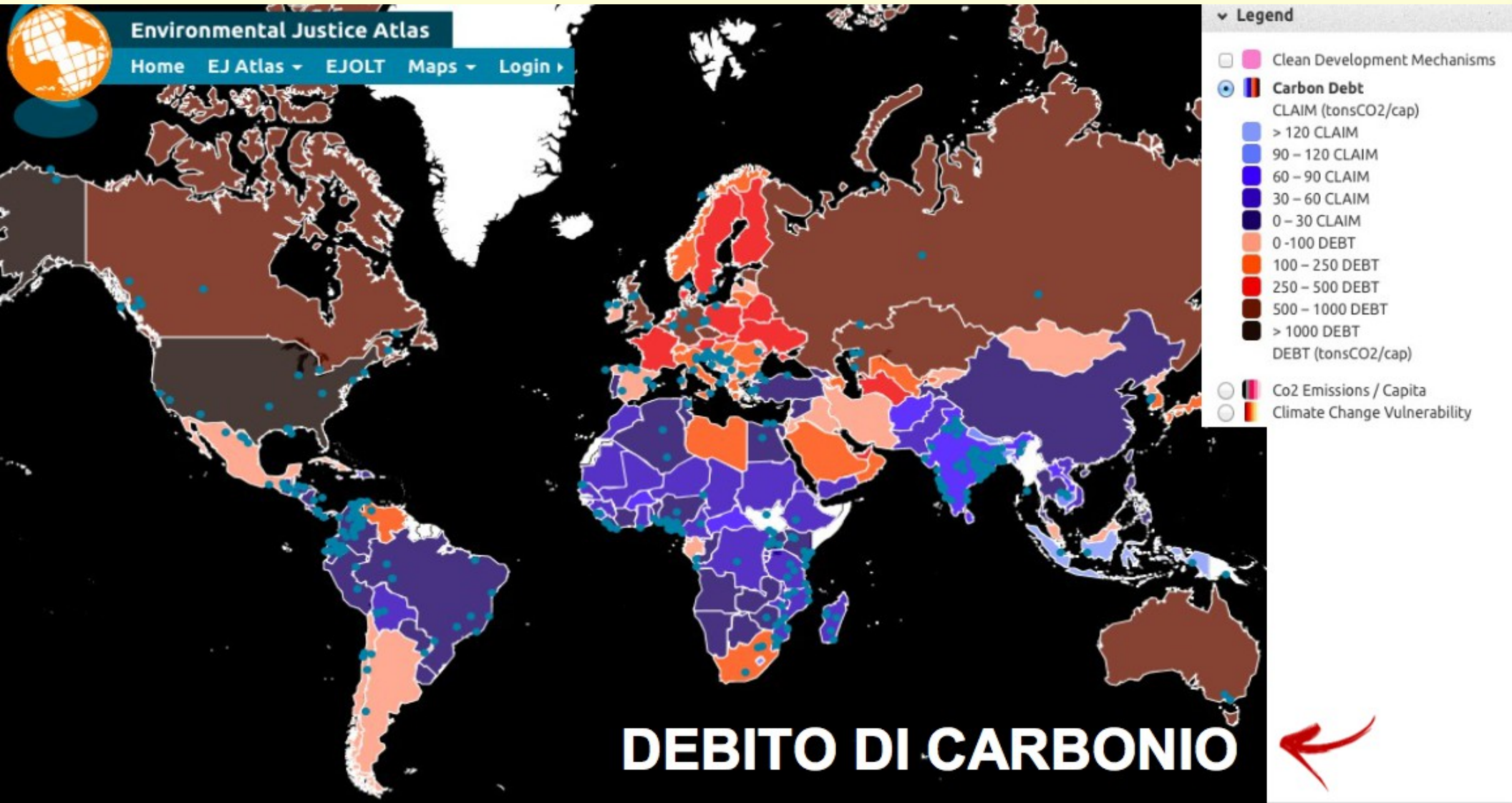
Apply Clear

Please pick from the **fields** above and drag the **options** to the panel on the right. You can use the **logical boxes** below to create complex filters.



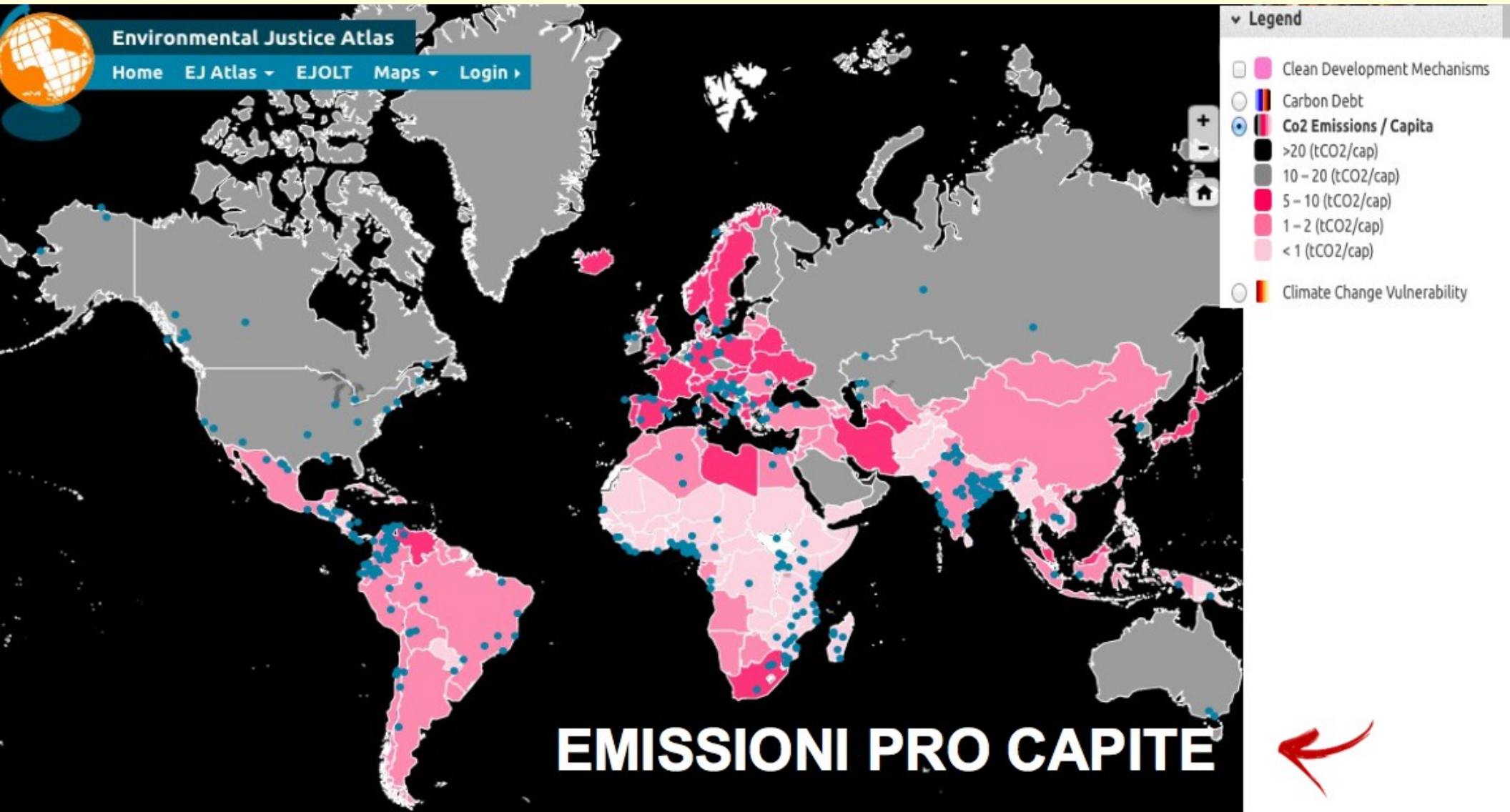
ENVIRONMENTAL JUSTICE ATLAS - EJATLAS

Featured map / climate justice



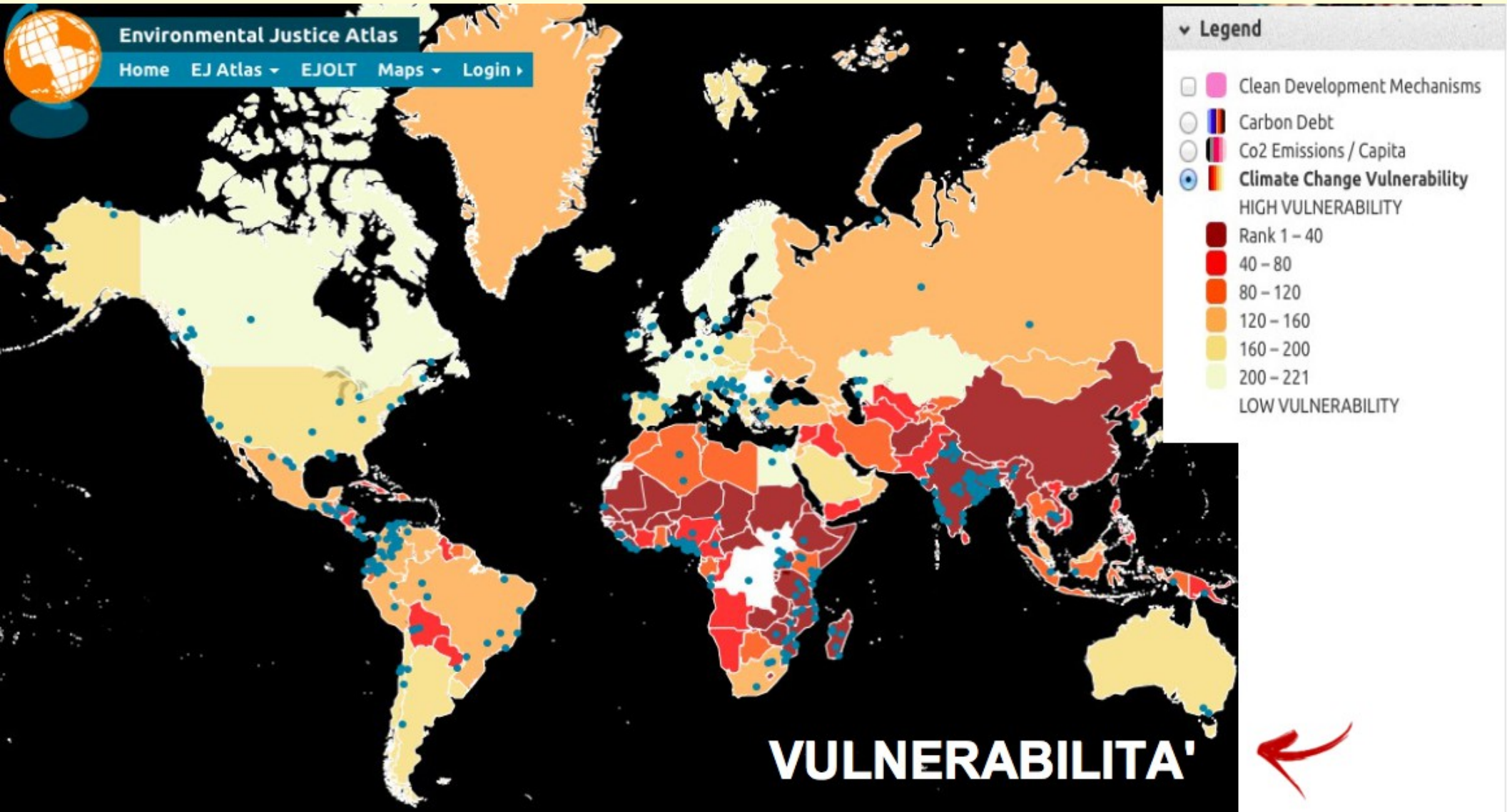
ENVIRONMENTAL JUSTICE ATLAS - EJATLAS

[Featured map](#) / climate justice



ENVIRONMENTAL JUSTICE ATLAS - EJATLAS

Featured map / climate justice



ITALIAN JUSTICE ATLAS - ATLANTE ITALIANO



WWW.CDCA.IT

WWW.EJATLAS.ORG

WWW.ASUD.NET

