

Ecologic Institute
An International Think Tank for Environment and Development

Berlin

Brussels

Washington D.C.

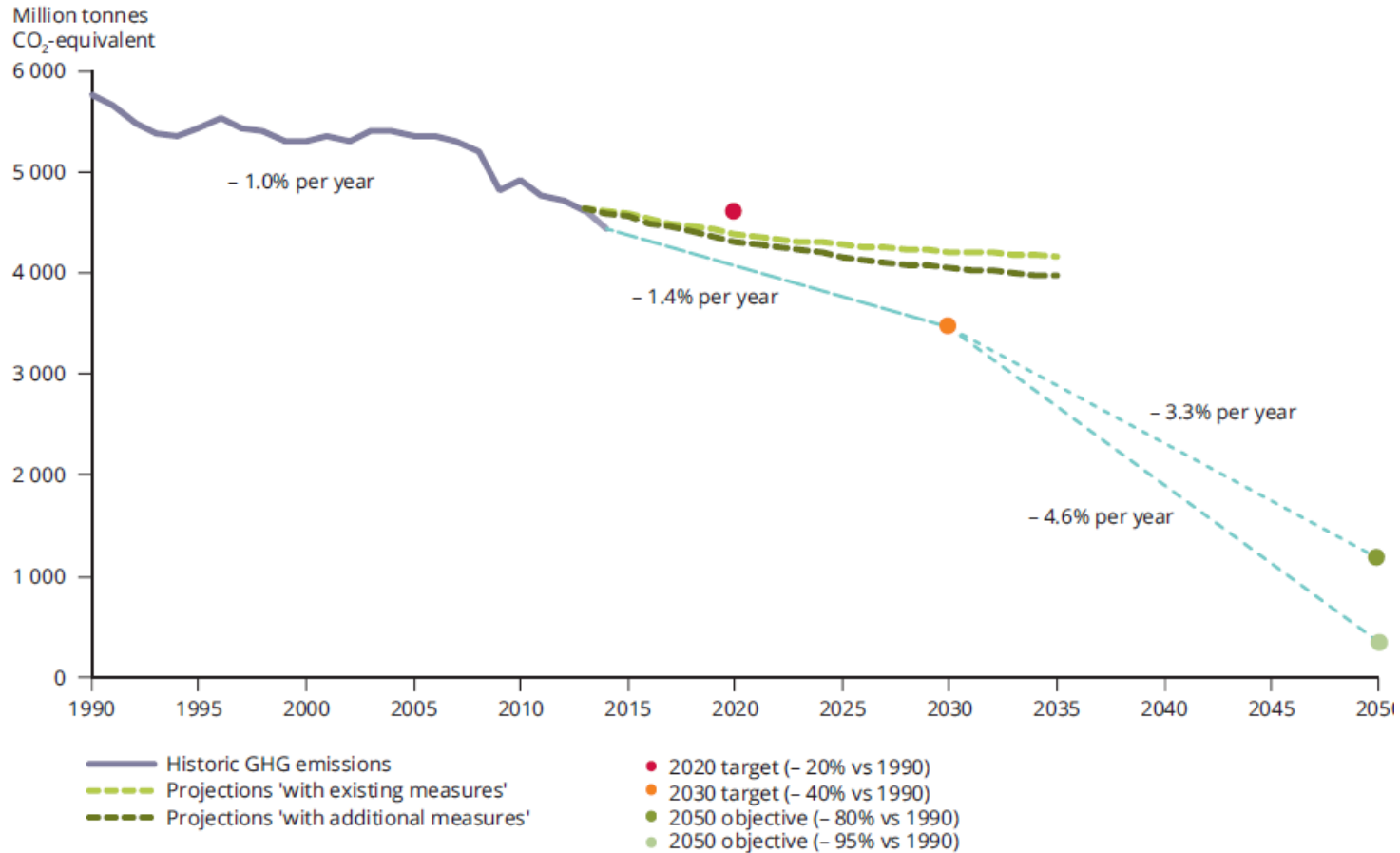
San Mateo CA



THE EFFORT SHARING DECISION POST-2020: GOVERNANCE AND LEGAL CONSIDERATIONS

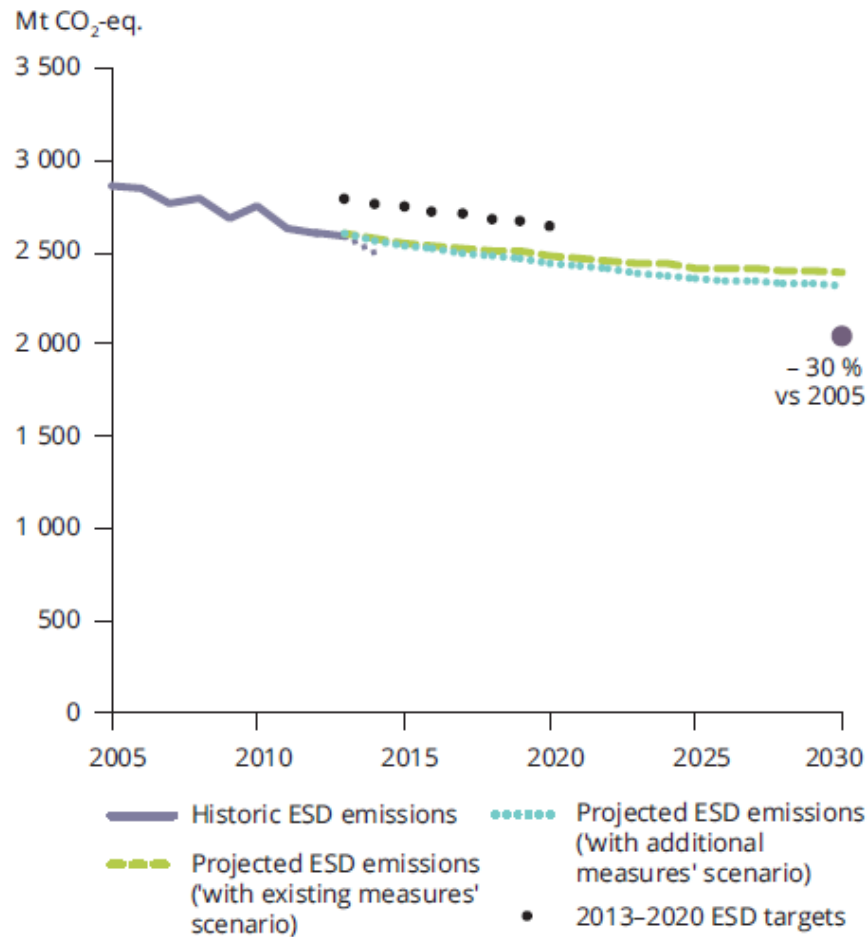
Nils Meyer-Ohlendorf, Ecologic Institute, Berlin

EU GHG – trends, projections and targets



Source: EEA, 2015.

GHG trends and projections in ESD sectors



ESD reform proposals

- ▶ (Ambitious) ESD is an essential means to implement the Paris Agreement
- ▶ Ambitious long-term target for 2040, 2050 and beyond
- ▶ Robust review mechanism
- ▶ <http://ecologic.eu/13650>

Thank you!

Dr. Nils Meyer-Ohlendorf

Ecologic Institute, Pfalzburger Str. 43-44, D-10717
Berlin

Tel. +49 (30) 86880-0, Fax +49 (30) 86880-100

nils.meyer-ohlendorf@ecologic.eu

www.ecologic.eu

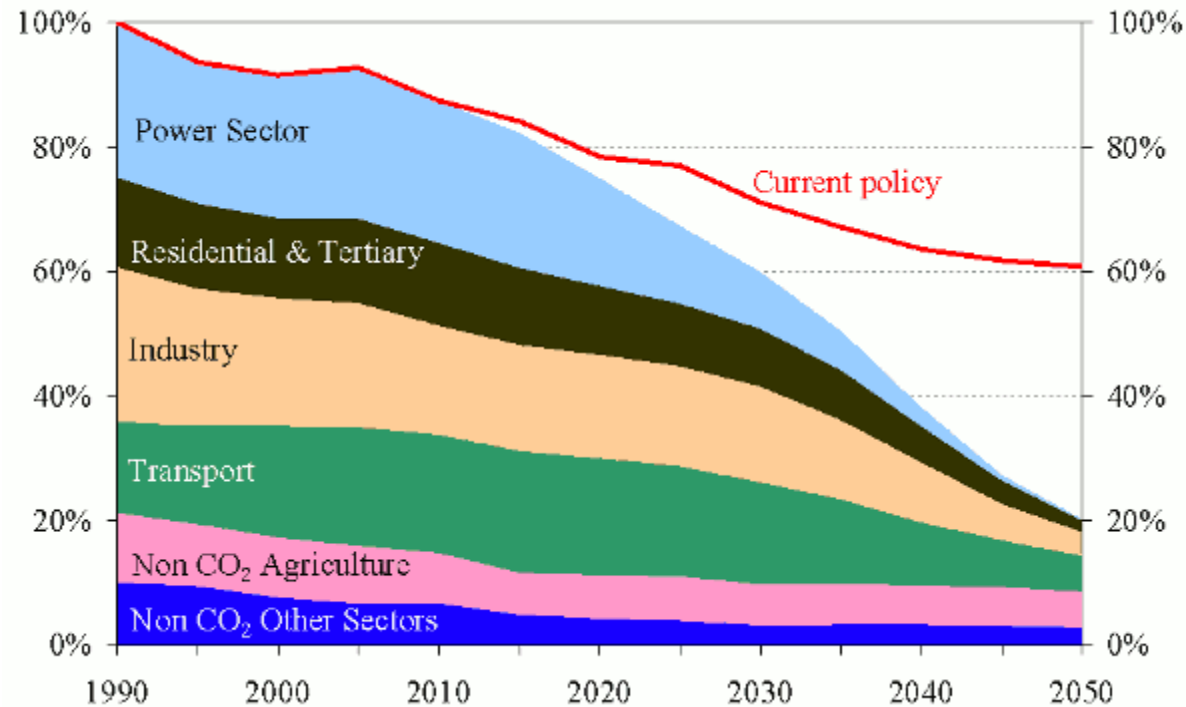
Minimum conditions expected for achieving ESD budgets, 2013-2020

Use of flexibility mechanisms	'With existing measures' scenario	'With additional measures' scenario
No use of flexibility mechanisms	24 Member States ^(a)	24 Member States and Austria
Transfer of AEs between years (only)	Belgium	Ireland ^(b)
Other flexibility mechanisms needed	Austria, Ireland, Luxembourg ^(b)	

Note: ^(a) 24 Member States: Bulgaria, Croatia, Cyprus, the Czech Republic, Denmark, Estonia, Finland, France, Germany, Greece, Hungary, Italy, Latvia, Lithuania, Malta, the Netherlands, Poland, Portugal, Romania, Slovakia, Slovenia, Spain, Sweden and the United Kingdom.

^(b) No WAM projection scenario is available for Belgium and Luxembourg.

EU GHG emissions towards an 80% domestic reduction (100% = 1990)

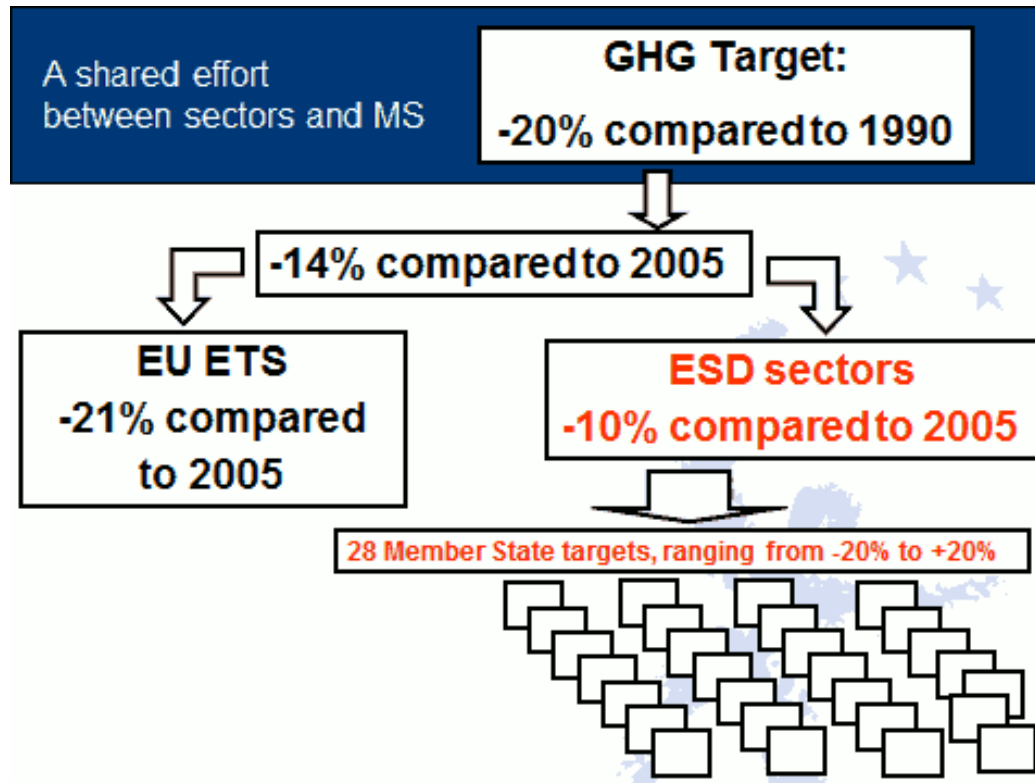


Source: European Commission - http://ec.europa.eu/clima/policies/effort/index_en.htm

ESD surplus in 2020

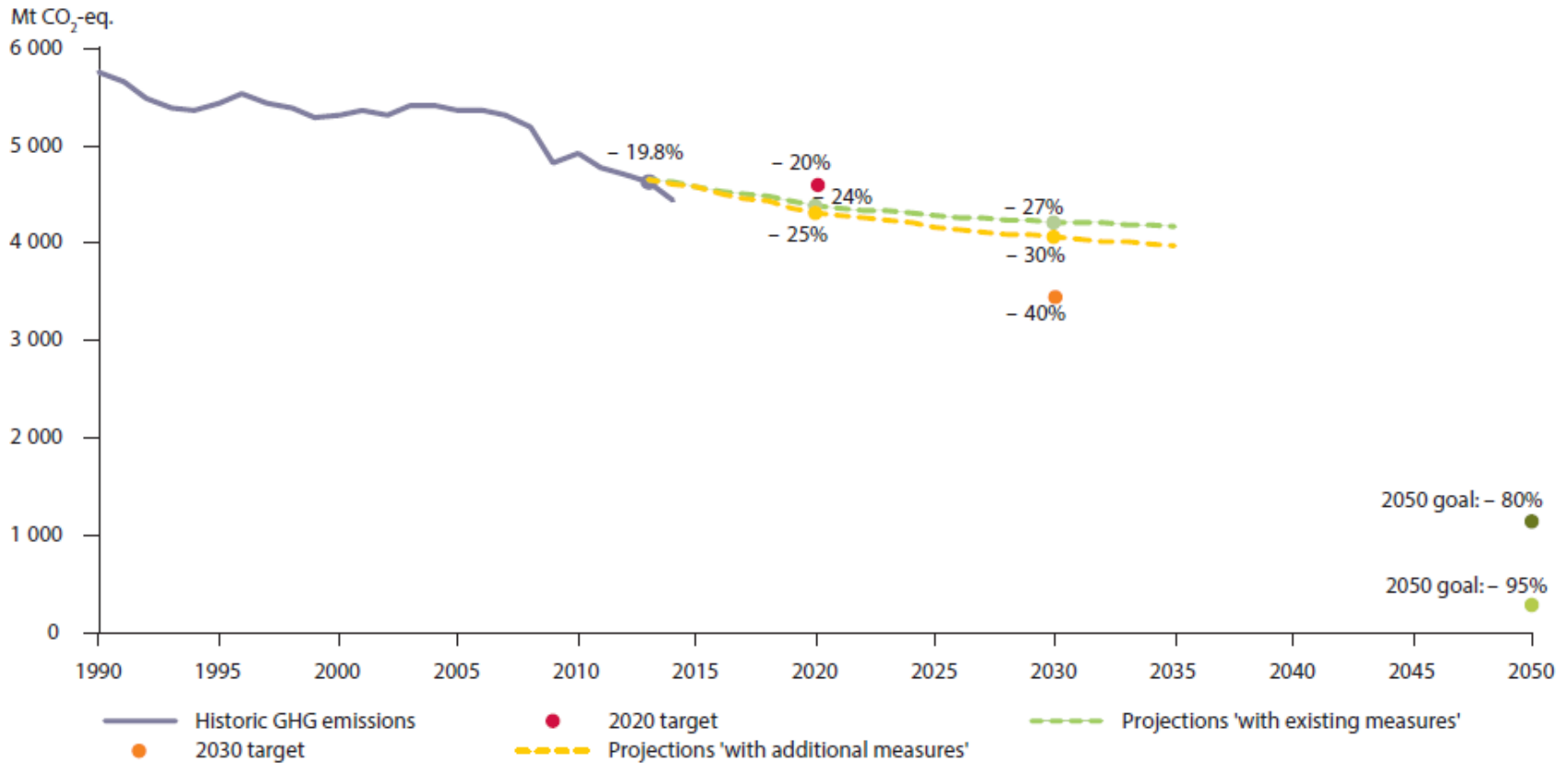
- ▶ MS expect a surplus of **1500-1700 mio.** AEAAs (EEA 2015 trends and projections report)
- ▶ This surplus is considerably higher than the 2014 EEA trends report **projected(700-1200 mio.)**

2020 Target – EU ETS and ESD



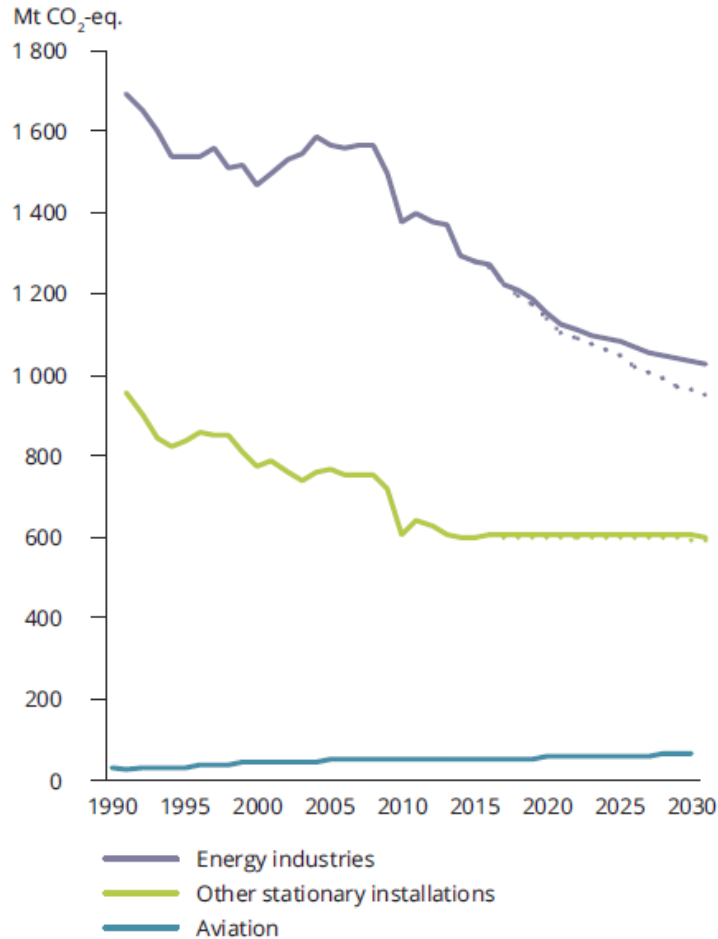
Source: European Commission - <http://ec.europa.eu/clima/policies/effort/framework/images/effort.png>

GHG trends, projections and targets, 1990-2050

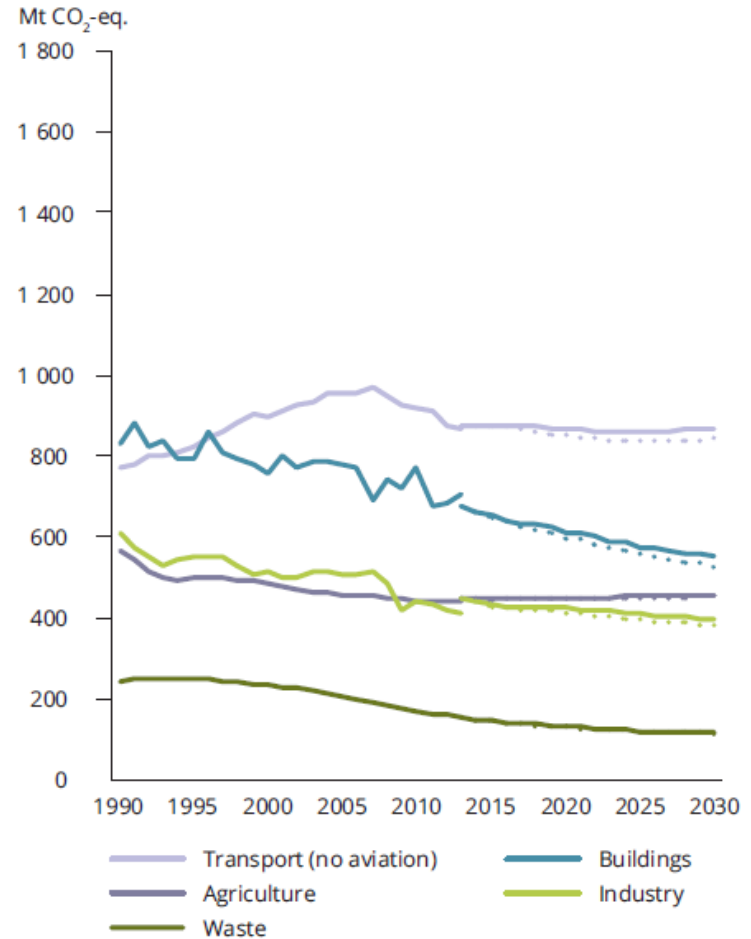


GHG trends and projections by sectors

Sectors covered by the EU ETS

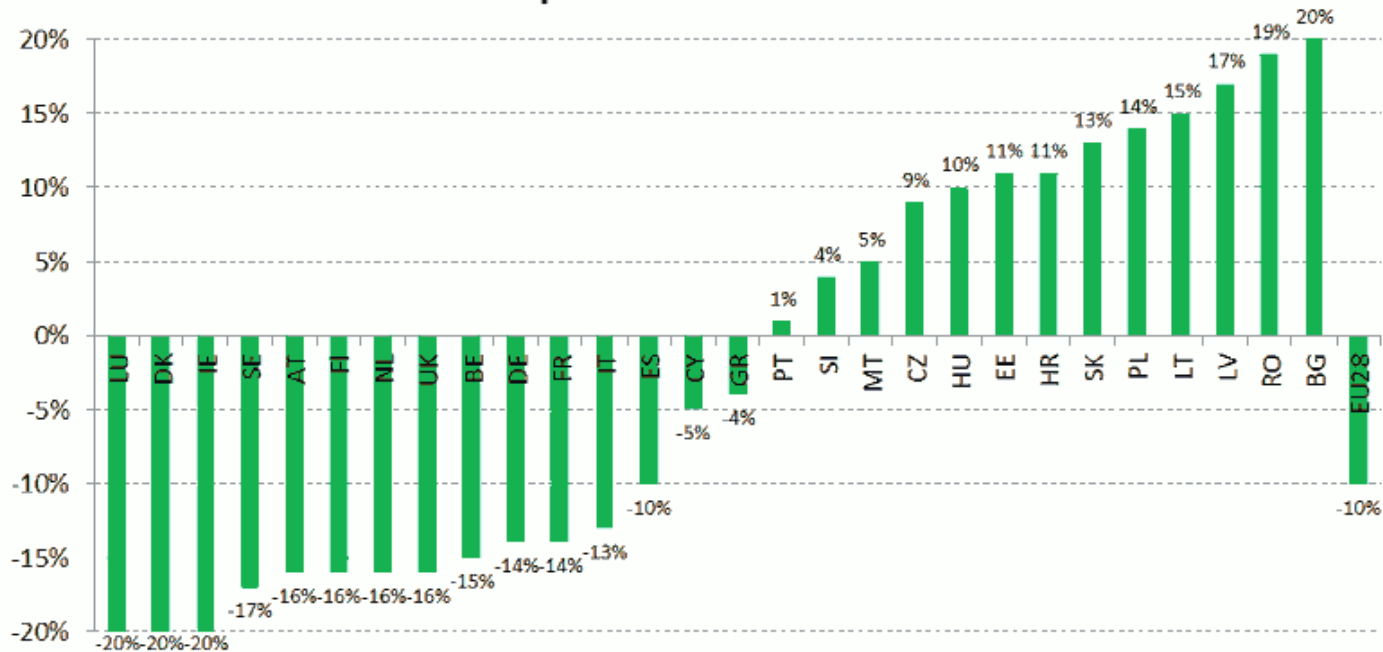


Sectors covered by the Effort Sharing Decision (ESD)

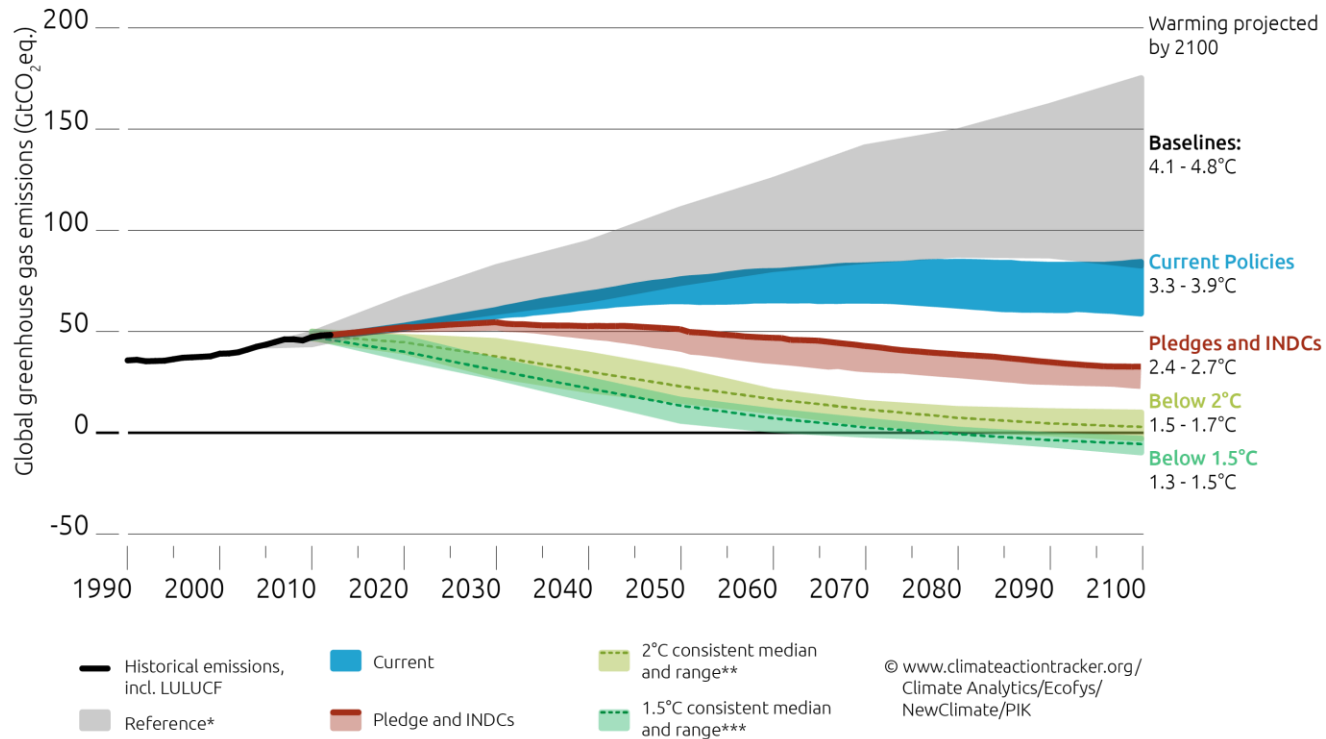


2020 GHG Emission Limits under ESD

Member State greenhouse gas emission limits in 2020 compared to 2005 levels

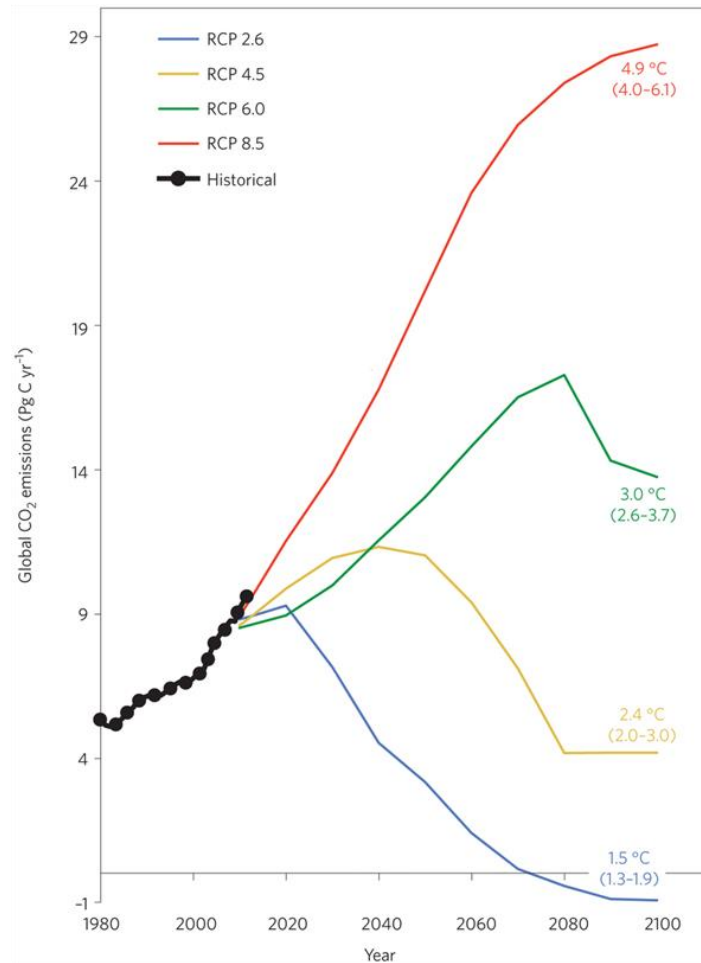


Source: European Commission - http://ec.europa.eu/clima/policies/effort/index_en.htm



* 5%-95% percentile of AR5 WGIII scenarios in concentration category 7, containing 64% of the baseline scenarios assessed by the IPCC
 ** Greater than 66% chance of staying within 2°C in 2100. Median and 10th to 90th percentile range. Pathway range excludes delayed action scenarios and any that deviate more than 5% from historic emissions in 2010.
 *** Greater than or equal to 50% chance of staying below 1.5°C in 2100. Median and 10th to 90th percentile range. Pathway range excludes delayed action scenarios and any that deviate more than 5% from historic emissions in 2010.

Source: http://climateactiontracker.org/assets/Global/december_2015/CAT_Graph_global_150712_for_website-e-01.png



Source: http://www.carbonbrief.org/media/392683/emissions-trajectory-1-_600x811.jpg

80-95% GHG Reductions by 2050

Presidency Conclusions 30 October 2009:

“The European Council calls upon all Parties to embrace the 2°C objective and to agree to global emission reductions of at least 50%, and aggregate developed country emission reductions of at least 80-95%, as part of such global emission reductions, by 2050 compared to 1990 levels; such objectives should provide both the aspiration and the yardstick to establish mid-term goals, subject to regular scientific review. It supports an EU objective, in the context of necessary reductions according to the IPCC by developed countries as a group, to reduce emissions by 80-95% by 2050 compared to 1990 levels.”