



Sacrifice of “Clean Development” and Carbon Trade: the Jambi Case, Sumatera

the East Kalimantan case, Kalimantan

Civil Society Workshop on Carbon Markets in South East Asia
Bangkok, 12 – 14 Oktober 2011



What “Clean Development”?

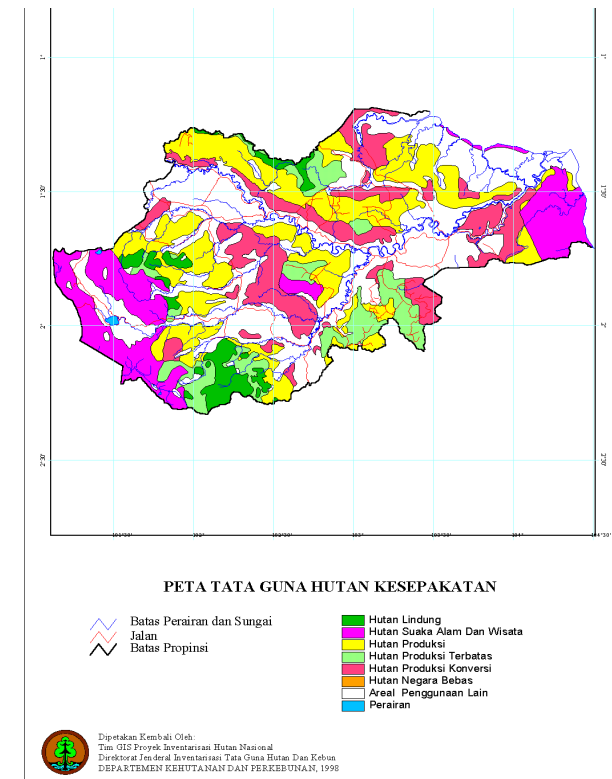
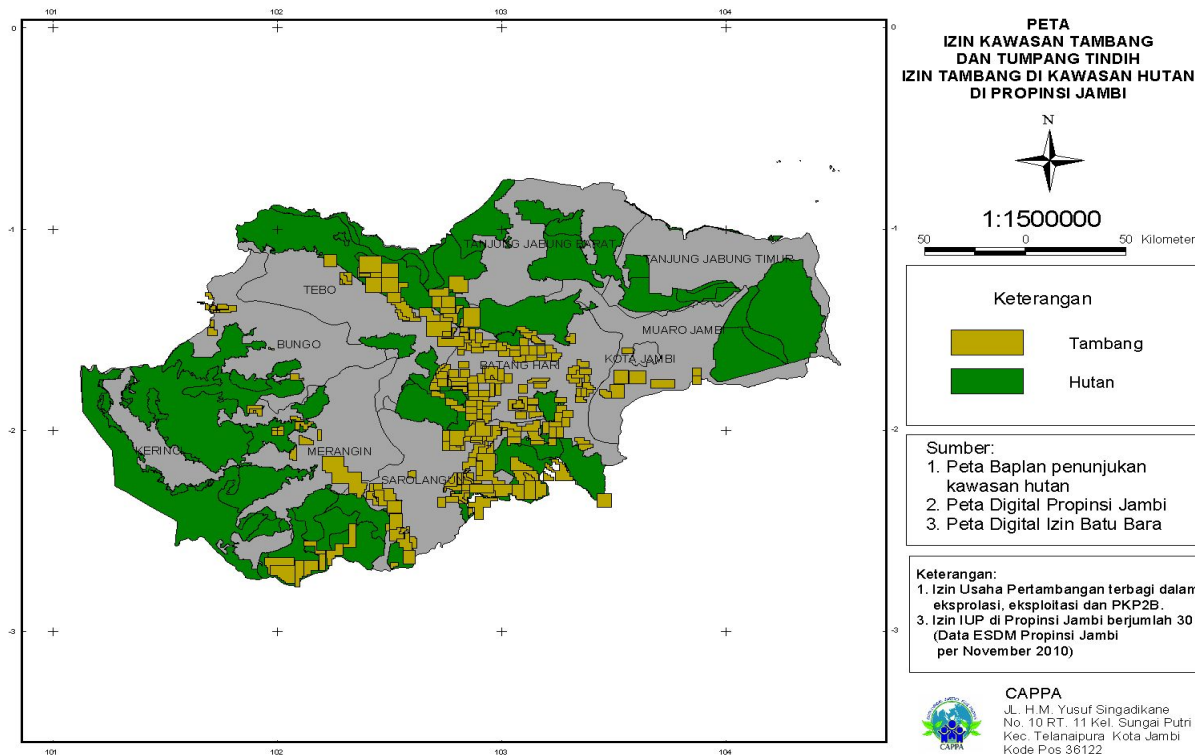
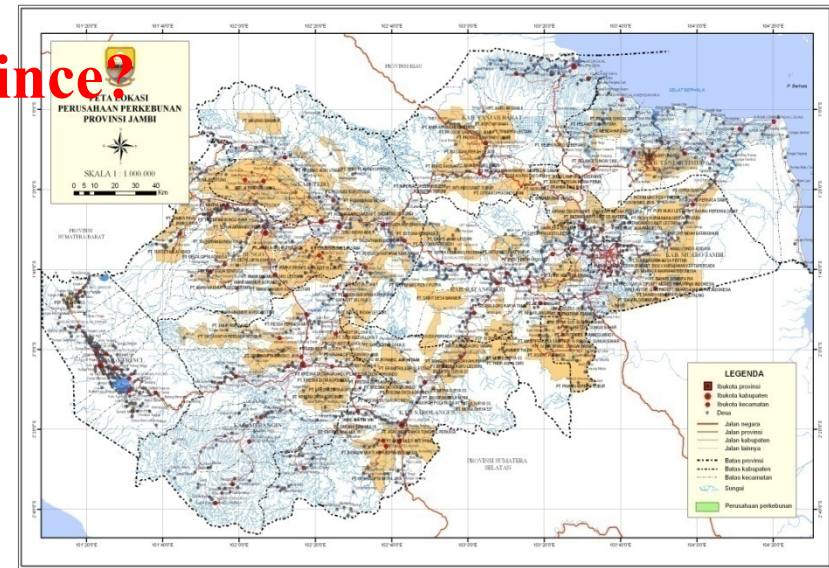
Fact from the Ground

On Land Control Site and Social-Environment Issue's

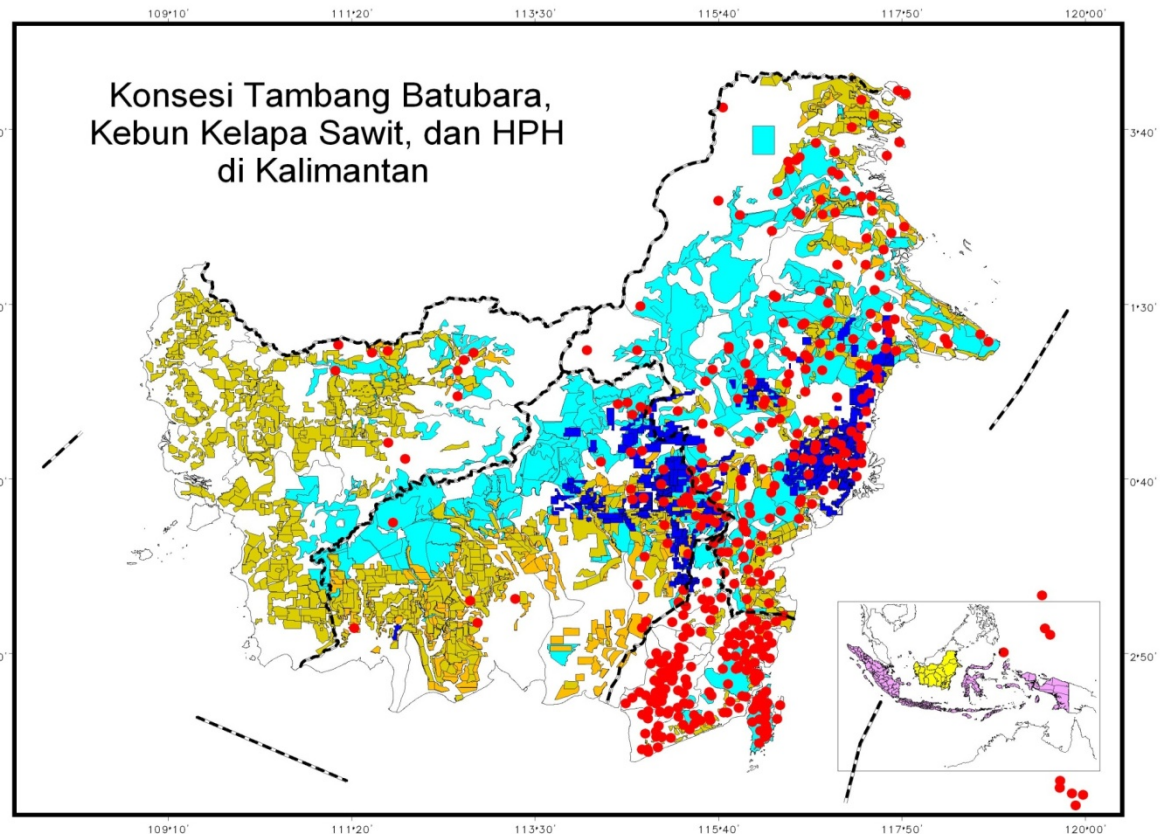


Who controls the land in Jambi Province?

Jambi Province spans over 5.1 million hectares:
 2.1 million hectares of forestland – 1.3 million hectares of HPHs,
 about 800,000 hectares of conversion forest, more than 600,000
 hectares of oil palm plantations, more than 700,000 hectares of
 mining concessions.
 About 2.6 million hectares of land and
 natural resources are controlled by corporations (excluding
 property ones)



Who Controls the Lands in East Kalimantan and Kalimantan Region?



East Kalimantan region-wide is 19,88 million hectares, BUT, cool mining-oil palm-logging concession included timber plantation have concession about 21,7 million hectares. These concession more large than East Kalimantan provinces more-less 1,5 million hectares!!! Where is land for peoples for carbon project???

How do corporations manage land and natural resources?

For cooking oil and energy, for global paper consumption, for fossil fuel





How do corporations appropriate people's land?
Destroying people's houses, including indigenous people's, impoverishing people, committing violence and human rights violation, appropriating, demolishing property, "dividing and ruling", using violence, criminalizing the poor

What About Carbon Project :

Carbon Project in Jambi and East Kalimantan

Jambi

Australia-Indonesia Carbon Partnership (AICP) funded by Australia Government

Berbak Carbon Project, funded by British Embassy

MCC USA-Green Prosperity

Ecosystem Restoration, Harapan Rainforest funded by German Government, Singapore Airlines, KfW Development Bank, Conservation International, Darwin Initiative, European Union, Birdlife Switzerland

East Kalimantan

Malinau Project :GIZ+Kfw, Inhutani II, GER/BTRF

Berau Project : TNC, GIZ+Kfw, TFCA/USAID

Kutai Timur & Kutai Kartanegara: PT RHOI (+Clinton Foundation), PT Global Green

Kutai Barat: WWF, TFCA/USAID

Kaltim: McKinsey-Government Provincial Consultants

Kelompok Kerja REDD (Working Group on REDD) : Pokja REDD

Kaltim, Pokja REDD Berau, DDPI Kaltim

What about Carbon Projects?

Land conflicts with farmers and indigenous peoples
Using violence, violating human rights, ---
displacing farmers from forestland, demolishing people's houses and
properties, arresting and beating people,
neglecting indigenous peoples' rights to land



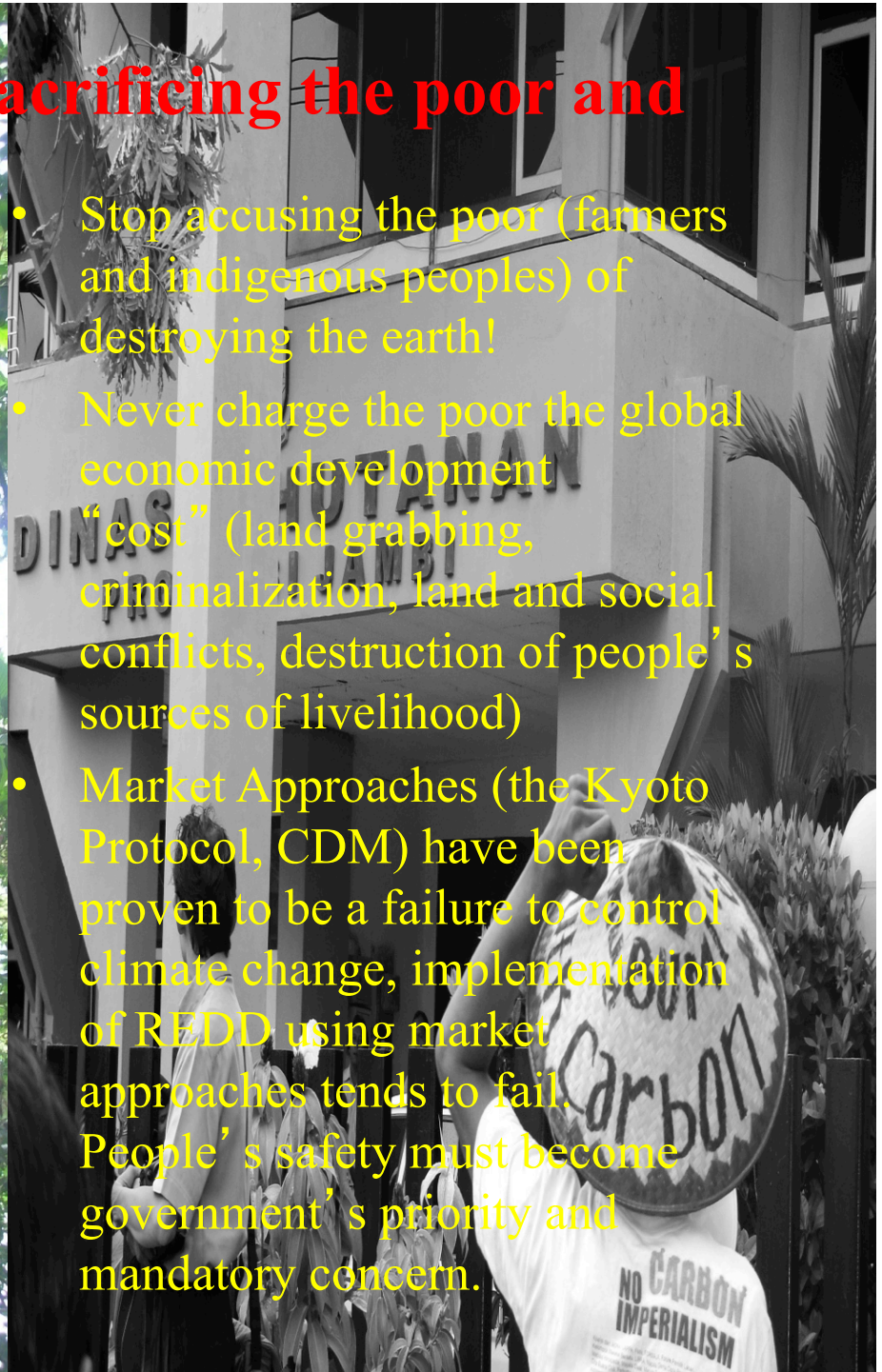
Carbon Trading =
These about Land Fight for Poor People
(indigenous people and farmer) !



Carbon Project involved on Land Grabbing and
avoid to recognize indigenous people right ---
reduce to low access to land,
against farmer right access to land

Saving the Planet through sacrificing the poor and Market Approaches?

- Stop accusing the poor (farmers and indigenous peoples) of destroying the earth!
- Never charge the poor the global economic development “cost” (land grabbing, criminalization, land and social conflicts, destruction of people’s sources of livelihood)
- Market Approaches (the Kyoto Protocol, CDM) have been proven to be a failure to control climate change, implementation of REDD using market approaches tends to fail. People’s safety must become government’s priority and mandatory concern.



thank you

